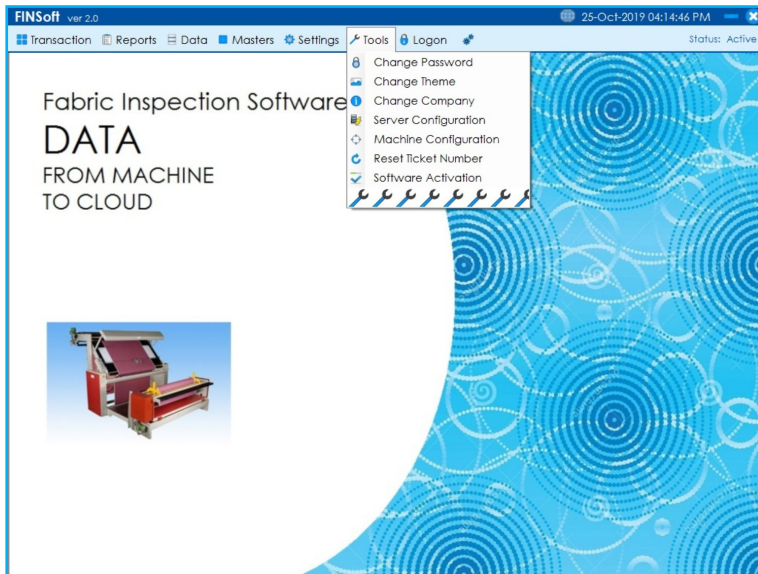


Fabric Inspection Software



Fabric Inspection Software (FINSoft) is application software for inward the roll of fabric, inspect & detect the defects of the fabric and dispatch the fabric to sales or cutting in the field of Weaving, Cotton, Spinning Mills, Textiles and Garments.

Aspects

- ✓ Improve product quality
- ✓ Minimize waste
- ✓ Reduce the cost
- ✓ Avoid short shipment/Order cancellation
- ✓ Increase productivity

Transactions

- ✓ Inwards
- ✓ Roll Fabric Inspection
- ✓ Fold Fabric Inspection
- ✓ Monitoring and Dispatching
- ✓ Normal or Dallas Inspection
- ✓ 4-Point Inspection
- ✓ 10-Point Inspection
- ✓ Zero defect / Graniteville "78" Inspection

Reports Generation

- ✓ Date and Period wise report
- ✓ Shift wise report
- ✓ Roll No. wise report
- ✓ GRN wise report
- ✓ Buyer/Order No. wise report
- ✓ Supplier wise report
- ✓ Invoice No. wise report
- ✓ Lot No. wise report
- ✓ Color Wise report
- ✓ Style wise report
- ✓ Description Wise report
- ✓ Multiple Combinations wise report
- ✓ Defect Report
- ✓ Report from Client DB
- ✓ Report from Cloud

Data Management

- ✓ Invoicing
- ✓ Resource Utilization
- ✓ Reprint Slip
- ✓ Modify Transaction
- ✓ Data Upload to Server
- ✓ Backup data
- ✓ Delete ticket no. wise data
- ✓ Recover data
- ✓ Search Data
- ✓ FTP Transfer
- ✓ Report Conversion

Technical Features

- ✓ Detect defects using Encoder, Controller and FINSoft
- ✓ User privilege for software security
- ✓ Easy Integrate with any machine
- ✓ Integrate with any weight indicator
- ✓ Integrated with any printer
- ✓ Report conversion to required format
- ✓ Report from Cloud Server
- ✓ Data Uploading to Cloud Server
- ✓ Data transferring to Centralized System
- ✓ Customization of Slips / Report Format
- ✓ All in One solution for any machine
- ✓ Smooth operation, even behind firm walls
- ✓ Highest Security Standards
- ✓ Simple to install and use
- ✓ Much more than competitively priced
- ✓ Data over the LAN, WAN, Internet

Printing

- ✓ Windows or DOS Printing
- ✓ Print only when the tickets needed
- ✓ Print QR Code / Barcode Label
- ✓ Printing on Standard or Formatted Slip
- ✓ Printing on Preprinted Slip
- ✓ Print the Slip with Fabric Photo
- ✓ Print the Slip with Company Logo
- ✓ No. of copies to be Print

Data to Server

- ✓ Connect to SQL Server or Oracle or MySQL
- ✓ Unique Ticket No. for every transaction
- ✓ Ticket No. prefix with Machine Code
- ✓ Status of data in client when no connectivity
- ✓ Resend the data when Server connects

System Minimum Requirements

- ✓ Windows 32 or 64 bit Operating System
- ✓ Intel Core i3 (or higher)
- ✓ 2GB RAM
- ✓ 60GB Hard Disk
- ✓ Touch Screen 15" Display or higher
- ✓ DVD ROM
- ✓ Optimized for 1024 x 768 pixels displays



Master Management

- ✓ User Master
- ✓ Shift Master
- ✓ Defect Master (32 Nos. of defects)
- ✓ Description Master (can be rename)
- ✓ Color Master (can be rename)
- ✓ Style Master (can be rename)
- ✓ Customer Master (can be rename)
- ✓ Supplier Master (can be rename)
- ✓ Resource Master
- ✓ Machine Master
- ✓ Print Master

Settings

- ✓ Custom fields (10 User fields can be rename)
- ✓ Weight Indicator (1 No. of scale)
- ✓ Controller Settings
- ✓ RFID / Smart Card Settings
- ✓ Barcode & Scanner Settings
- ✓ SMS Settings
- ✓ SMTP Settings
- ✓ FTP Settings
- ✓ Printer Settings
- ✓ Text File Settings for ERP/SAP
- ✓ Privilege Settings

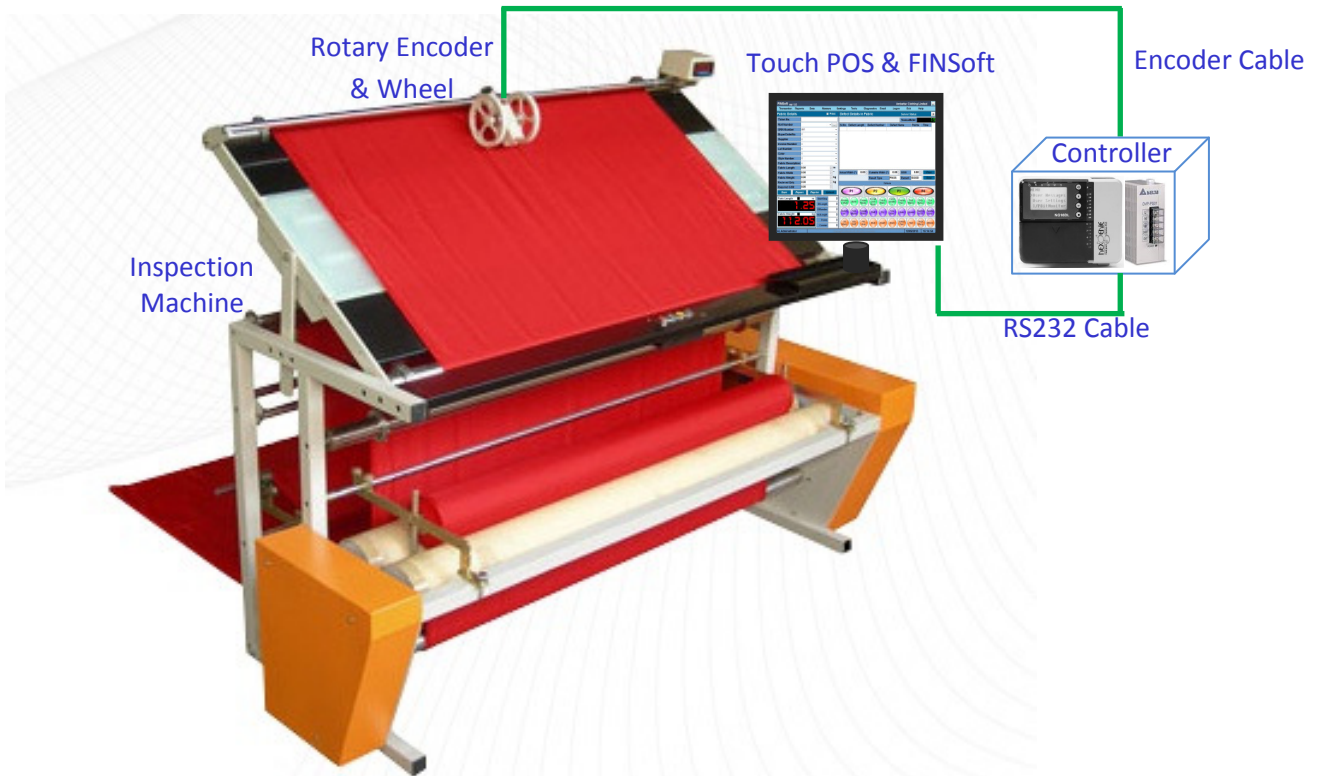
Tools

- ✓ Change Password
- ✓ Change Company
- ✓ System Configuration
- ✓ Server Configuration
- ✓ Machine Configuration
- ✓ Reset Ticket No.

Diagnostics and Emailing

- ✓ Scale Checking
- ✓ System Report
- ✓ Settings Report
- ✓ Compose Email with Attachment
- ✓ Address Book


Inspection using Encoder, Controller and FINSoft with Touch Screen Monitor



Sequence of Operation

- ✓ Select Fabric Description and Start to inspect
- ✓ Feed the fabric in the machine as per the given instructions
- ✓ Touch the respective defect name in Software
- ✓ At end of the roll, enter Actual Width, Cuttable Width, GSM for 3 times & Stop
- ✓ FINSoft will generates the Inspection Report with Actual Length, Defect Name, Defect Length, No. of Defects and Points details



4 point system		10 point system		Barcode Label
Length of Defects	Penalty Points Allotted	Warp Defects	Penalty Points Allotted	Ambattur Clothing Limited Ambattur Industrial Area, Chennai-600058 Roll No.: 040229320006 GRN No.: MIN187 Lot No.: 2 Color: 4234 Style: 02K Desc.: 03 Length: 122.50 m Width: 59.70 " Weight: 10.35 kg GSM: 230 Date: 09/02/2014  040229320006
Up to 3 inches	1 Point	10 - 36 inches	10 Points	
3 - 6 inches	2 Points	5 - 10 inches	5 Points	
6 - 9 inches	3 Points	1 - 5 inches	3 Points	
Over 9 inches	4 Points	Up to 1 inch	1 Point	
Holes and Opening (1 inch or less)	2 Points	Filling Defects	Penalty Points Allotted	
Holes and Opening (over 1 inch)	4 Points	Full Width	10 Points	
		5 inches to half the width of fabric	5 Points	
		1 - 5 inches	3 Points	
		Up to 1 inch	1 Point	

Fabric Quality Inspection Report using 4, 10 Points and Graniteville "78" system

[illegible]

Defects List

No	Defect Name
1	Abrasion Mark
2	Barre
3	Crease Marks
4	Compaction Mark
5	Crack/Starting Mark
6	Contamination
7	Course Yarn
8	Dust Marks
9	Dirty Splice
10	Dye Spot
11	Distortion
12	Fold Marks
13	Foreigh Fibre
14	Fluff
15	Fly
16	Fine Yarn
17	Hole
18	Knots
19	Machine Oil
20	Needle Line
21	Oil Marks
22	Oily Weft
23	Pin Hole
24	Slub
25	Snart
26	Stain
27	Soiled Yarn
28	Torn
29	Thick Place
30	Shoe Mark
31	Set Off
32	Reworks

Note:

All defects can be renamed to the required defect number using Defect Master in the FINSoft.

Fabric Quality Inspection Report for Normal and Dallas Report

ASIAN FABRICX PRIVATE LIMITED

Fabric Inspection Report

Page 1 of 5

Karur

All: All wise report from 01-Mar-2019 to 01-Mar-2019, Transaction Type: Inspection

Roll No.	Fabric Desc.	Length(m)	Width(")	GSM	Color	Style	Lot No.	Pnts/100sqm	Result
283	Pattern	62.19	59.00	270.00	color	Style	210	6.43	Pass
Sl. No.	Defect No.	Defect Name			Defect at Length (m)		Points	Time	01/03/2019
1	2	Barre			35.35		1	10:06:39	
2	10	Dirty Splice			35.46		1	10:06:39	
3	3	Compaction Mark			62.19		2	10:10:59	
Roll No.	Fabric Desc.	Length(m)	Width(")	GSM	Color	Style	Lot No.	Pnts/100sqm	Result
284	Pattern	21.36	59.00	270.00	color	Style	210	9.36	Pass
Sl. No.	Defect No.	Defect Name			Defect at Length (m)		Points	Time	01/03/2019
1	3	Compaction Mark			7.77		2	10:16:06	
Roll No.	Fabric Desc.	Length(m)	Width(")	GSM	Color	Style	Lot No.	Pnts/100sqm	Result
285	Pattern	90.07	59.00	270.00	color	Style	210	16.65	Pass
Sl. No.	Defect No.	Defect Name			Defect at Length (m)		Points	Time	01/03/2019
1	3	Compaction Mark			5.42		2	10:20:18	
2	13	Dye Spot			5.76		1	10:20:21	
3	15	Fluff			18.53		1	10:21:33	
4	14	Fine Yam			18.79		1	10:21:35	
5	11	Distortion			57.93		1	10:25:06	
6	11	Distortion			86.70		2	10:27:39	
7	13	Dye Spot			87.08		3	10:27:41	
8	15	Fluff			87.38		4	10:27:43	
Roll No.	Fabric Desc.	Length(m)	Width(")	GSM	Color	Style	Lot No.	Pnts/100sqm	Result
286	Pattern	8.21	59.00	270.00	color	Style	210	73.08	Fail
Sl. No.	Defect No.	Defect Name			Defect at Length (m)		Points	Time	01/03/2019
1	11	Distortion			4.13		2	12:13:04	
2	13	Dye Spot			8.21		1	12:13:18	
3	21	Machine Oil			8.21		1	12:13:19	
4	32	Rework			8.21		0	12:13:20	
5	2	Barre			8.21		1	12:13:21	
6	10	Dirty Splice			8.21		1	12:13:22	

Our Scope of Supply

- Touch POS PC
- FINSoft – Fabric Inspection Software V2.0
- Rotary Encoder with Wheels and 5m Cable
- Length Controller and RS232 Cable
- Power Supply Unit for Controller